

Flat 43, Sheringham Court, 11 Clayton Road, Hayes, UB3

Guide Price £240,000

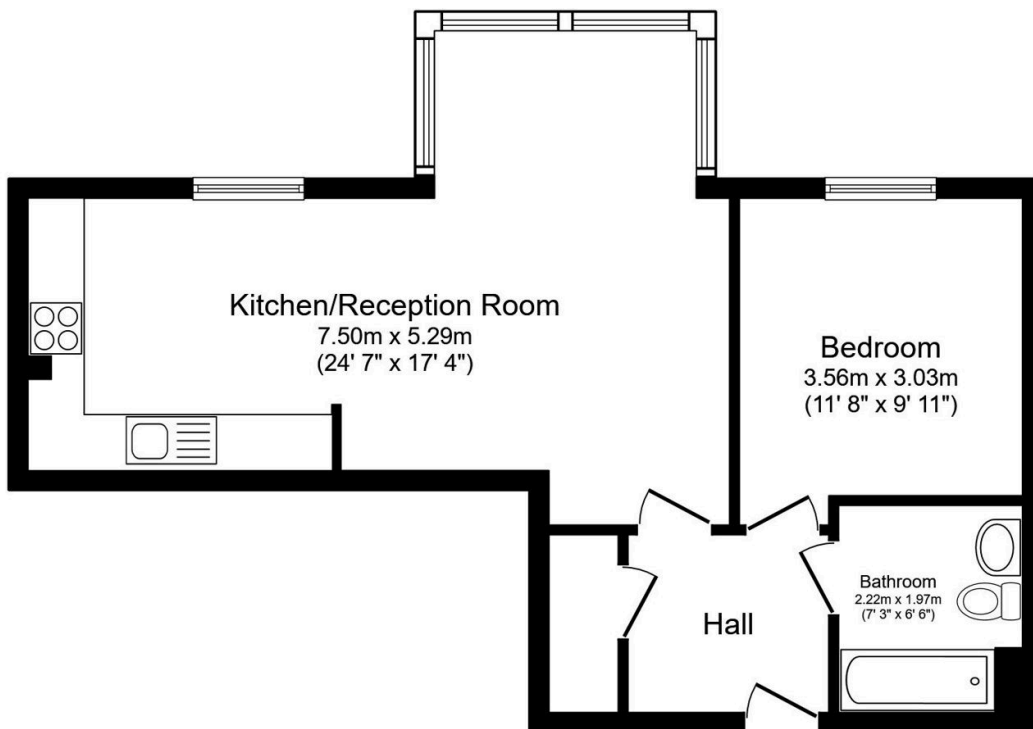
1 1 1



ONE BEDROOM - ONE BATHROOM - OPEN PLAN KITCHEN / LIVING ROOM - LIFT ACCESS - LEASEHOLD - CHAIN FREE

Henry Wiltshire are pleased to present this well maintained one bed property apartment located within Sheringham Court, Clayton Road, Hayes which comprises of an open plan kitchen reception area, laminated flooring, double bedroom. This building offers lift access to floor and is located to local shops just on your doorstep, along with just 0.1 mile to Hayes & Harlington which hosts the Elizabeth Line taking you just 15 minutes to Paddington.

- One Bedroom
- Lift Access
- Leasehold
- Ground Rent - £200pa
- Chain Free
- One Bathroom
- Wooden Flooring
- Service Charge - £1,980pa
- Lease Remaining - 107 years
- Hayes & Harlington train station 0.1 mile



This floor plan is for illustrative purposes only. It is not drawn to scale. Any measurements, floor areas (including any total floor area), openings and orientation are approximate. No details are guaranteed, they cannot be relied upon for any purpose and they do not form part of any agreement. No liability is taken for any error, omission or misstatement. A party must rely upon its own inspection(s). Powered by www.focalagent.com